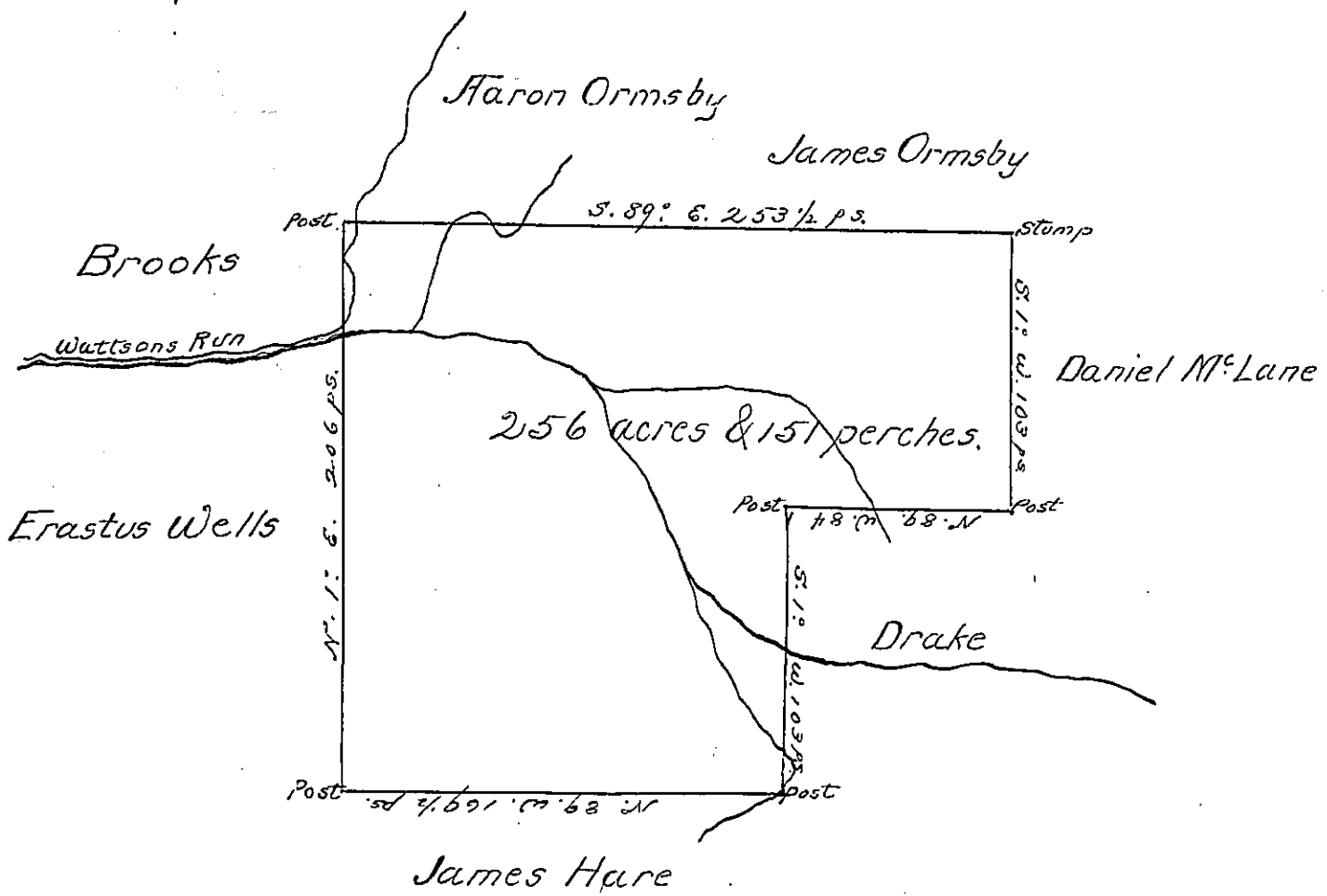


Peter Cottrell



A draught of land in Waterford township Erie County, it being part of a tract designated as letter O Surveyed for Peter Cottrell Oct. 25th. 1851 in pursuance of the Actual settlement of Newell Shepards-son containing 256 acres and 151 perches and the allowance of six per cent for roads &c.

David Wilson C.S.

To the Hon.

J. P. Brawley,
Surveyor General,
Harrisburgh,
Pa.

IN TESTIMONY that the above is a copy of the original remaining on file in the Department of Internal Affairs of Pennsylvania, made conformably to an Act of Assembly approved the 16th day of February, 1833, I have hereunto set my Hand and caused the Seal of said Department to be affixed at Harrisburg, this second day of September 1902.

James W. Latta
Secretary of Internal Affairs.